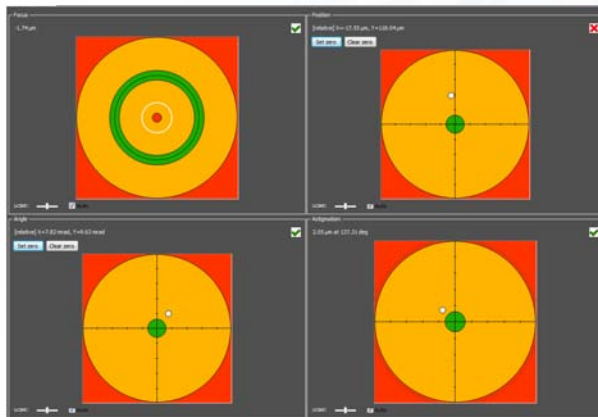


## Real Time Beam Monitoring

Position **Size** Power **Ellipticity**

**Tilt** Defocus **Astigmatism**



### Applications

- Optics Alignment
- Laser Line Adjustment
- Focus & Collimation Adjustments
- Beam Quality Diagnostics
- Laser Performance Adjustments
- Elliptic Beam Orientation
- Optical Beam Alignment
- Linear Displacement Measurement
- Vibrations , Rotation Analysis
- Monitoring Laser Power & Centration
- Laser Process Monitoring

✓ *Real Time XYZO Parameters*

✓ *Sub Micron Precision*

✓ *Single sensor, No Moving Parts*

✓ *For Coherent & Non Coherent Beams*

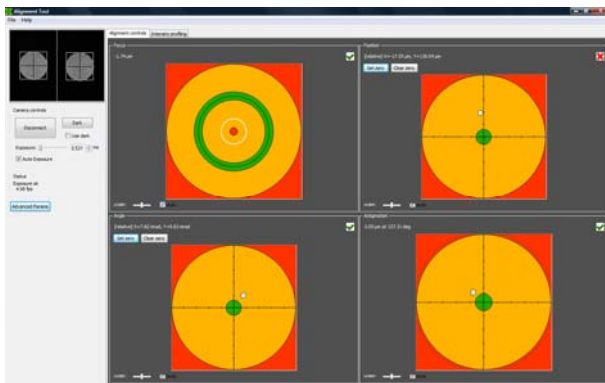
## Smart and Affordable Beam Monitoring & Alignment Solution

*R&D Labs • Industrial & Medical Lasers • Optics Manufacturing*

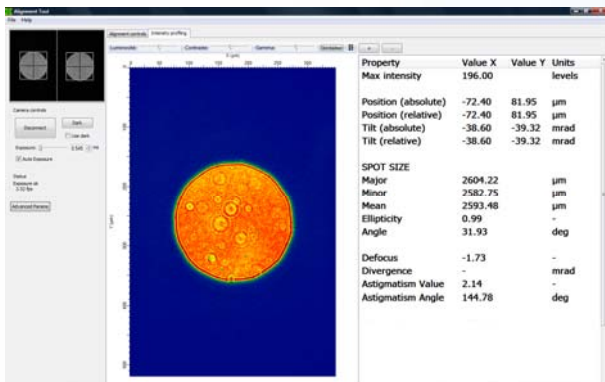
*Machinery & Laser Process • Maintenance & Field Service*

# Real Time Beam Monitoring

DWC-10 sensor integrates the latest development of PhaseView's Digital Wavefront Technology, providing the ability to monitor light beams in both **transverse plane (XY)** and **longitudinal direction (Z)**, in one single device without moving components.



- 4 quadrants for quick & fine adjustments of:
  - XY Position
  - Tilt
  - Focus
  - Astigmatism
- Absolute or relative mode
- User defined adjustments tolerances



- Size & Centroid
- Power
- Ellipticity & Orientation
- Beam display

Specifications	DWC -10
Wavelength range, nm	350 - 1100
Measurement Speed	10Hz*
Beam Position, Accuracy	< 1 µm
Beam Tilt, Accuracy	< 0.5 mrad
Weight, g	62
Dimensions, mm	34 x 32 x 28
Optical Interface	C-mount
Software Requirements	7, Vista, XP
Interface	USB 2
<b>Optional Accessories</b>	
LED Point Light Source	535nm +/- 15nm
Relay Optics & Diaphragm	x 0.20 - x 0.33 - x 0.53
Attenuators	ND Filters 2, 4, 6, 8